

LABEL PRINTER

Instruction Manual

Notes on safety

This section presents important information intended to ensure safety and effective use of the printer. Please read carefully.

Notes on safety

- ▲ Be sure to use the specified battery and power source provided by our company. Connection to an improper power source may cause fire, explosion or damage to the printer.
- ▲ Please don't open the paper room cover when it is printing or just when printing is over, do not touch the print head with hand or body, overheat may cause scald.

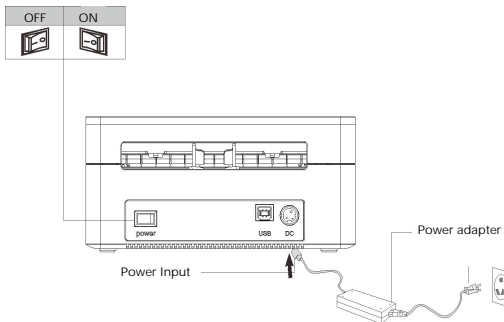
Notes:

1. Do not store the printer in hot and humid area.
2. The printer's adapter needs a stable power 110~220 Volts. Please do not use other devices on the same power socket, to avoid voltage fluctuations.
3. Avoid water or conductive material (for example: metal). If water is present on the surface please turn off the power immediately.
4. Please ensure that a paper roll is always inserted in the printer to avoid damaging the printing roller and the printer head.
5. Please ensure that your printer is serviced and repaired by a qualified technician. No responsibility is taken for misuse and/or non-qualified servicing.
6. In order to ensure print quality and longevity of your printer, please ensure that only good quality paper rolls are used.
7. Please keep this manual in a safe place, where it can be accessed easily and used for your reference.

CD files Download link :
<http://www.barcodead.net/prINTER/9260.zip>

2. Connect to the power

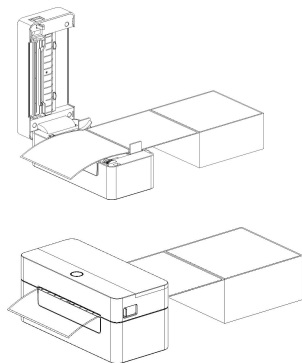
- (1) Place the printer on a stable surface and make sure the power is off.
- (2) Connect the two ends of the USB data cable to the printer and the host computer respectively.
- (3) Plug the power cord into both the printer and the power socket.



Note:
Please ensure the printer is powered off before connect to the power.

3. Loading Media

- (1) Push the open button to open the cover.
- (2) Put the media to the sheetbox.
- (3) Guide the media through the paper guide, pull over the roll.
- (4) Close the cover carefully.



Note:
Please make sure the cover is firmly closed.

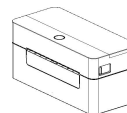
1.Packing list

The barcode printer
USB cable
Quick start guide

Power adapter
Power cord
CD



Quick Start Guide



Printer



CD



USB Cable

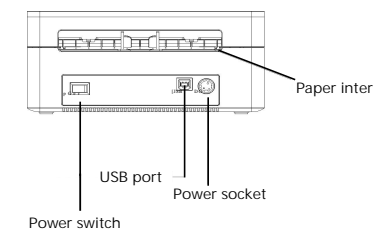
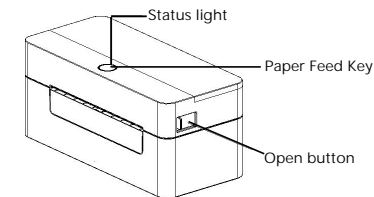


Power Adapter



Power Cord

Size: 185*85*85mm
Weight: 722g



Instruction of LED and Buttons :

LED Color	Description
Blue(fixed)	Press the power button about 3S,Power on, Standby
Blue(blinking)	Downloading data or the printer is paused.
Purple	The printer is formatting the data.
Red(fixed)	Printer is in head opened or cutter error status
Red(blinking)	Printing error occurs,out of paper,paper jam,etc.

Paper feeding:

When the printer is stand by(LED blue fixed),the installed paper will move forward one unit if feed button is pressed once.

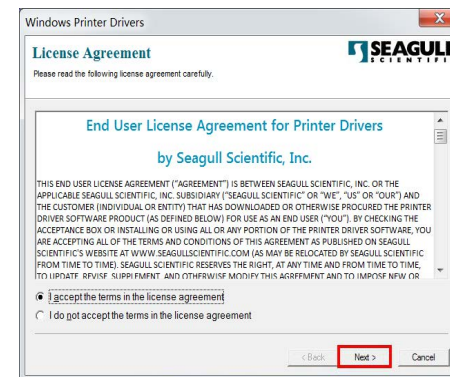
Printer self-test page:

1. Turn off the printer.
2. Turn on the printer while holding down the feed button.
3. When the indicator blinks red after the first purple,release the feedbutton.
- Indicator color cycle mode: Purple Blue Red(blink 5times) Purple (blink 5times) Blue(blink 5times) Blue(fixed)
4. The sensor will calibrate the label paper and the printer will print out the self-test value,and finally enter the debugging mode and print out the value.
5. Turn the printer off and on again to return the printer to the normal printing mode.

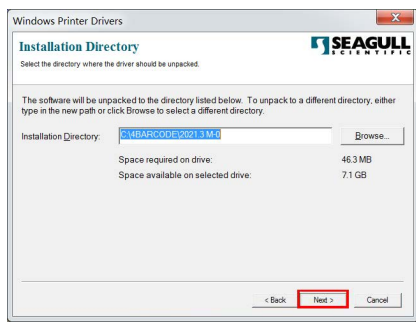
4. Driver Installation for Windows by USB Connection

Note: A printing software is required to be used with this driver
Each machine has a factory equipped with a CD, open the CD and find the label printer driver - WINDOWS, then click it to install the driver.

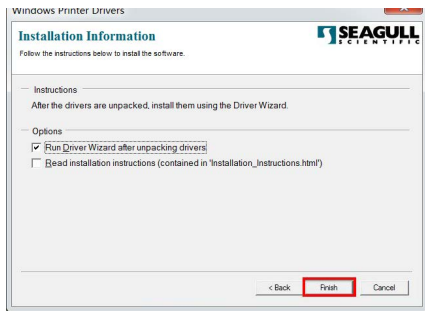
1. Double click "4BARCODE" and choose "I accept the terms in the license agreement", click " Next", as below picture :



2. leave " Installation Directory " as default , go " Next " :

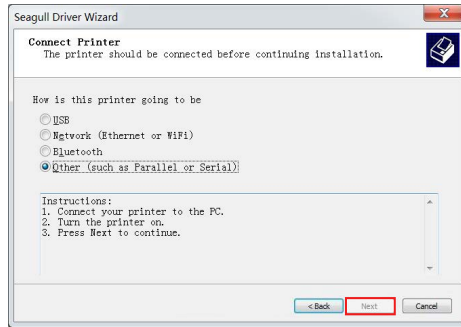


3. Choose " Run Driver Wizard after unpacking drivers " and go " Next "



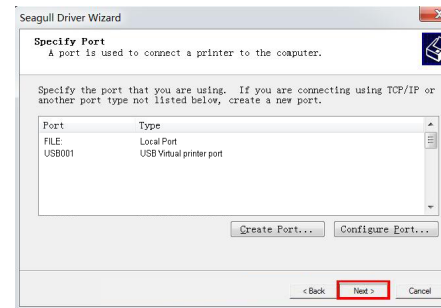
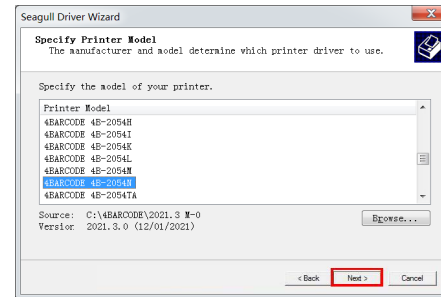
8

4. Choose " Install printer drivers", click "Next" as below picture :



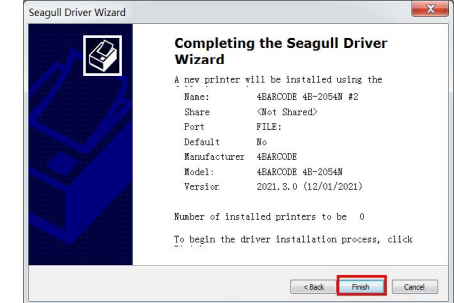
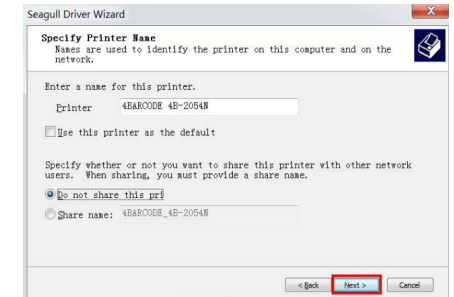
9

5. After installing the printer drivers , choose the "Other(such as a parallel or serial)", go "Next"; choose the model name "4Barcode 4B-2054N", go "Next"; this sheet no need to operate, go "Next" directly.



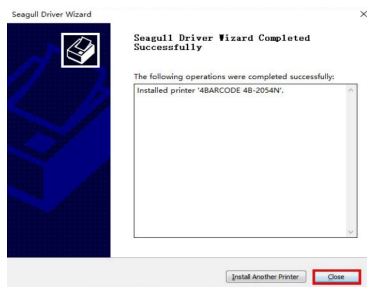
10

6. Default name of printer is "4BARCODE4B-2054N", Choose "Use " this printer as the default printer", click "Next" , Completing driver installation , click "Finish" as below picture:

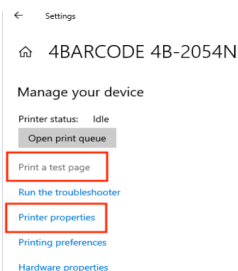


11

7. Complete the installation of driver " 4BARCODE4B-2054N " , click "Close" , As below picture:



8. Click the " Printer properties " and then Click " Print a test page " and the printer will print a test page.

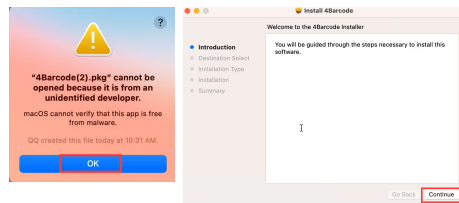


12

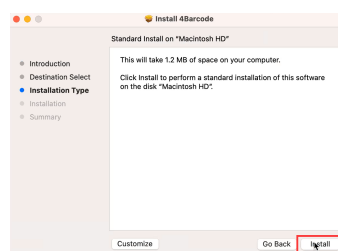
5. Driver Installation for Mac by USB Connection

Open the CD and find the label printer Drive-MACOS, then click it to install the drive.

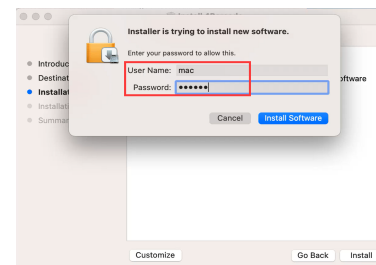
1. Double click "4Barcode.pkg", and choose "OK", click " Continue" , as below picture :



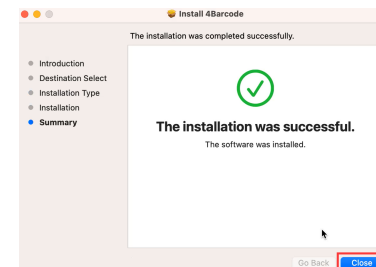
2. Please click the "Install" button, enter your Mac password



13

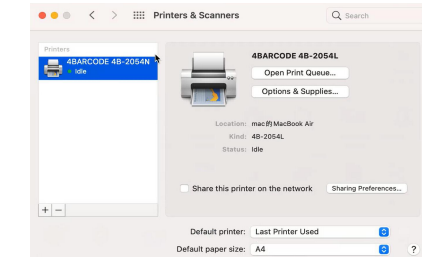


3. The driver installation was successful, then click the "Close" button



14

4. Please open "System Preferences", click "Printer & Scanners", click +button to add printer. If printer is connected to Mac, driver model will install automatically.(Model: 4B-2054N)



6. Editing software

► Please make sure the printer can be supported Bluetooth connected. Default bluetooth name of printer is "YHD-9260" If the connected device is IOS/Android system, Search the " Dlabel" editing software on your appstore and then install it

Default Bluetooth Name of Printer is "POS-9260"

1. Please scan below QR code
2. Or Go to APP store to search "4Barcode"



For IOS editing software



For Google Play editing software



For Android editing software

Please scan below QR code or open download link to get the android barcode editing software, or contact us to request APK
Download Link:
<http://www.barcode4read.net/printer/4barcode/Android.zip>

Install Password:1234

15